

MH-60

Material Handler

ENGINE
Cummins
X12

OPERATING WEIGHT
119,400 lbs
(54,200 kg)

GROSS POWER
400 hp
(298 kW)

MAX REACH
60 FT



SPECIFICATIONS

ENGINE

Emissions rating	EPA Tier 4 Final
Make	Cummins
Model	X12
Aspiration	Turbo charged, charge air cooled
Cooling fan drive	Reversible direct drive fan
Displacement	720 cu.in. (11.8L)
Gross power	400HP (298kW)@2100
Peak torque	2,034 N-m (1,500 lb-ft) @ 1,400 rpm
Cylinders	In-line, 6 cylinder HPCR
Bore x Stroke	132mm x 144mm (5.20 in x 5.67 in)

HYDRAULIC SYSTEM

KAWASAKI

Hydraulic piloted joysticks for simplicity (no laptop needed)

Pump Type	Dual Axial Piston Pump
Maximum flow	2x380 L/min
Max Pressure	4975 psi (34.3 mpa)
Hydraulic tank	76.6 gal.
Filtration	Dual Filtration System

All pressures can be accessed through the cab display. No special gauges needed.

UPPER CARRIAGE

The upper structure is strongly reinforced using an H-beam in the high cross section of main structure providing even weight distribution and increasing stability. The platform's collision protection system has been welded into place to improve its strength, rigidity, and overall service life.

TRAVEL / UNDERCARRIAGE

Type/ Drive System	All Wheel Drive variable displacement motor with dual stage power shift transmission
Travel Speed	1st 0 -4mph (0-7 km/h) 2nd 0-14 mph (23 km/h)
Tires	12.00-24/8.50 (solid rubber)
Steering	Joystick steering
Rear Axle	Fixed
Front Axle	Oscillating with hydraulic lock, integrated safety check valves
Service Brake	Disc brakes
Parking Brake	Multidisc brake , spring loaded
Safety	Travel Alarm

SWING SYSTEM

Drive	2 x axial piston motor driving planetary gearbox, integrated brake valves
Swing speed	12 rpm
Swing Hydraulic	open loop
Swing Brake	multi-disc brake, spring loaded
Swing Bearing	internal teeth, sealed bearing

Refill Capacities

Fuel tank	171 gal
Engine cooling system	13.2 gal
Engine oil w/filter	8.98 gal
Hydraulic tank	76 gal
Hydraulic system	124.2 gal
Swing motor (each)	1.4 gal
Axle hub (front)	.31 gal
Axle hub (rear)	.39 gal
Axle differential (front axle)	6.9 gal
Axle differential (rear axle)	5.1 gal
Axle transmission	.8 gal
Swing ring lubrication reservoir	.26 gal
Central lubrication reservoir	5.5 lb
Diesel exhaust fluid.	7.93 gal

ELECTRIC SYSTEM

System voltage	24 Volt
Battery	2 x 12 V, 120 Ah
Alternator	24v-70A

Operating Weight

Operating Weight, typical	119,400 lb
---------------------------	------------

Central Auto Lube

Groeneveld-BEKA

LGNA-SS-MH60-202308-ENG-US

Specifications and designs are subject to change without notice. Machines shown may include optional equipment.

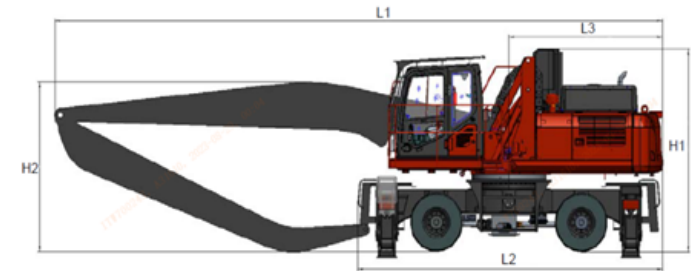
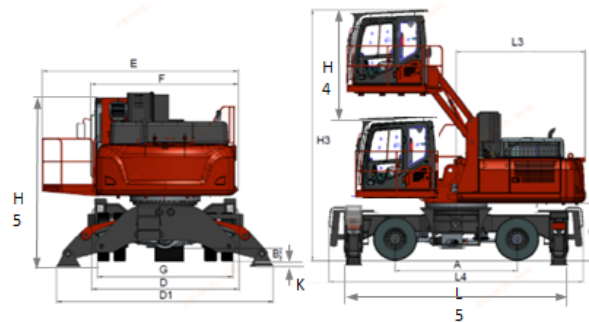
LiuGong Construction Machinery N.A., LLC.
22220 Merchants Way - Suite 100
Katy, TX 77449
USA

T: 281-579-8882
www.liugongna.com

F: 281-579-8388

SPECIFICATIONS

DEALER INFORMATION HERE



DIMENSIONS

Description	mm (In)
A Wheelbase	3600 (142")
B Ground Clearance	298 (12")
C Counterweight Clearance	1690 (67")
D Undercarriage width	3708 (146")
D1 Undercarriage width (all outrigger extended)	5465 (215")
E Width of upper structure (with operator catwalk)	3773 (147")
F Width of upper structure (without operator catwalk)	3089 (122")
G Track width (outside to outside)	3609 (142")
H1 Overall height	4260 (168")
H2 Boom height	3773 (147")
H3 Cab height (Raised)	6705 (264")
H4 Cab Raised height	2921 (115")
H5 Cab height (Lowered)	3954 (156")
K Wheel clearance (all outrigger extended)	101 (4")
L1 Overall length (with front)	6807 (268")
L2 Overall length (without front)	3657 (144")
L3 Rear end length	3638 (143")
L4 Undercarriage length	7441 (293")
L5 Undercarriage length (all outrigger extended)	6652 (262")

DIMENSIONS

Description	mm (In)
Overall width of machine (transportation)	4267 (168")
Boom Length	35 feet
Stick Length	24 feet
Maximum Reach Radius	60 feet
Cab Rise and Lower Speed	Max. 396.24 (1.3) (ASME B30.25)
Ambient Operating Temperature	"-23°C to 45°C (-9.4°F to 113° F)"

LGNA-SS-MH60-202308-ENG-US

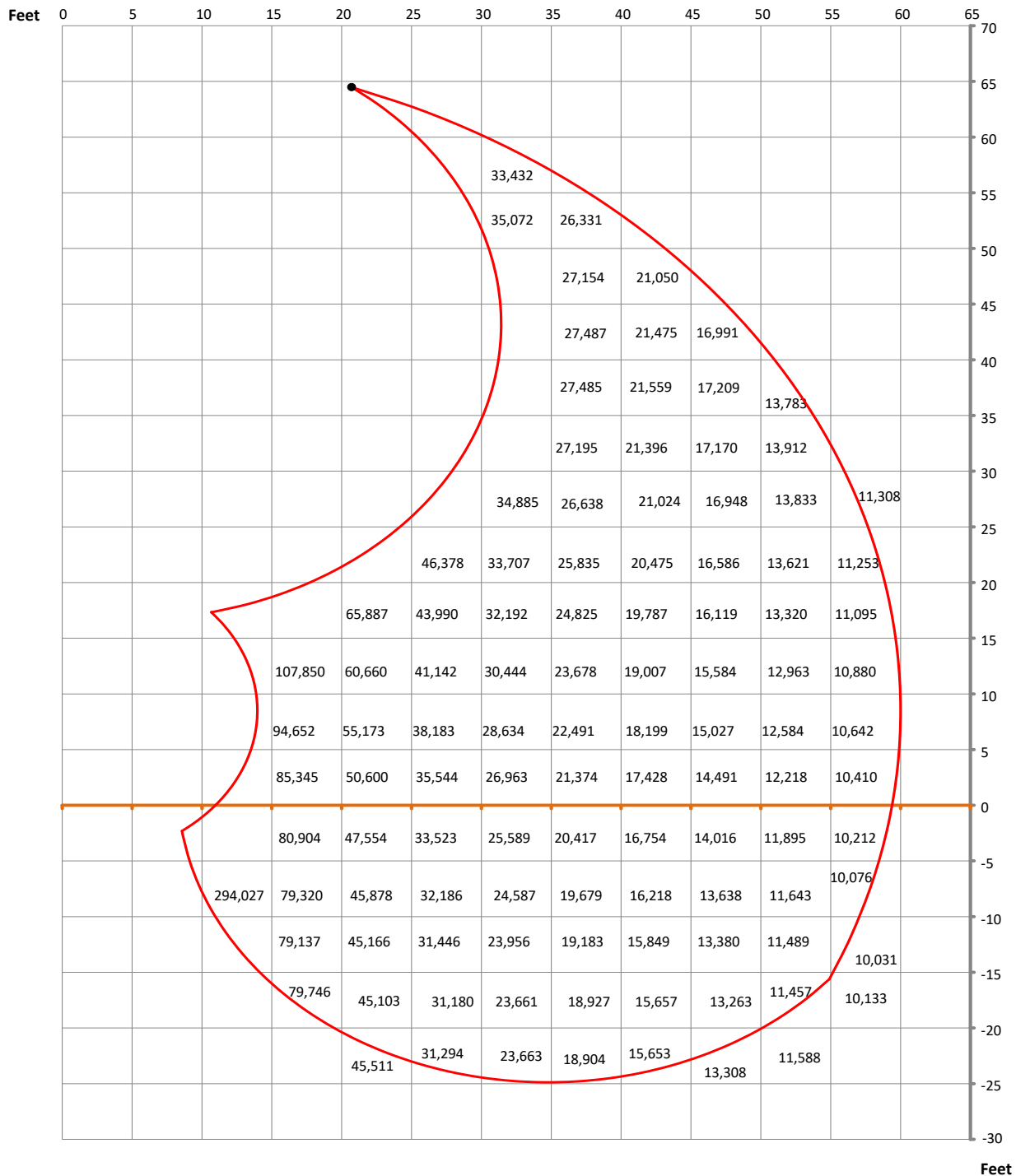
Specifications and designs are subject to change without notice. Machines shown may include optional equipment.

LiuGong Construction Machinery N.A., LLC.
22220 Merchants Way - Suite 100
Katy, TX 77449
USA

T: 281-579-8882
www.liugongna.com

F: 281-579-8388

MH 60 LOAD CHART



The load capacity number is in unit of pounds and the location is the left upper corner of the box. For example box 33,432 lbs is the load capacity at 30 ft reach and 60 ft height. The reach measurement is from the center point of the rotation bearing to the load point. The height is measured from the load point to ground. The load point is the center line of the attachment pivot mounting pin on the stick.

The load capacities are based on ISO 10567 and do not exceed 75% of tipping and 87% of hydraulic capacity and machine standing on firm, level supporting surface. Loads are valid for 360° with machine support outriggers. Lifting capacities do not include working equipment such as orange-peel grapples, magnets, clamshells, etc. Attachment weights must be deducted from the numbers indicated in the lift chart. Please contact LiuGong or your local dealer for optimum attachment selection. The operator of the machine should be fully acquainted with the operator's manual provided by LiuGong. Capacities apply only to the machine as originally manufactured and equipped by LiuGong.