

MH-50

Material Handler

ENGINE
Cummins
QSL9

OPERATING WEIGHT
100,770 lb
(45,700 kg)

GROSS POWER
225 hp
(168 kW)

MAX REACH
56 FT



SPECIFICATIONS

ENGINE

Emissions rating	EPA Tier 4 Final
Make	Cummins
Model	QSL9
Aspiration	Turbo charged, charge air cooled
Cooling fan drive	Reversible direct drive fan
Displacement	543 cu.in. (8.9L)
Gross power	286HP (213kW) @2000rpm
Peak torque	700ft-lbs @ 1500rpm/949Nm @ 1500 rpm
Cylinders	In-line, 6 cylinder HPCRl
Bore x Stroke	114 mm x 145mm (4.48 in x 5.71 in)

HYDRAULIC SYSTEM

KAWASAKI

Hydraulic piloted joysticks for simplicity (no laptop needed)

Pump Type	Dual Axial Piston Pump
Maximum flow	L/Min 2x300
Max Pressure	4975 psi (34.3 mpa)
Filtration	Dual Filtration System

All pressures can be accessed through the cab display. No special gauges needed.

UPPER CARRIAGE

The upper structure is strongly reinforced using an H-beam in the high cross section of main structure providing even weigh distribution and increasing stability. The platform's collision protection system has been welded into place to improve its strength, rigidity, and overall service life

TRAVEL / UNDERCARRIAGE

Type/ Drive System	All Wheel Drive variable displacement motor with dual stage power shift transmission
Travel Speed	1st 0 -4mph (0-7 km/h) 2nd 0-14 mph (23 km/h)
Tires	12.00-24/8.50 (solid rubber)
Steering	Joystick steering
Rear Axle	Fixed
Front Axle	Oscillating with hydraulic lock, integrated safety check valves
Service Brake	Disc brakes
Parking Brake	Multidisc brake , spring loaded
Safety	Travel Alarm

SWING SYSTEM

Drive	1 axial piston motor driving planetary gearbox, integrated brake vales
Swing speed	12 rpm
Swing Hydraulic	open loop
Swing Brake	multi-disc brake, spring loaded
Swing Bearing	internal teeth, sealed bearing

Refill Capacities

Fuel tank	164 gal
Engine cooling system	9.77 gal
Engine oil w/filter	7.93 gal
Hydraulic tank	63 gal
Hydraulic system	118 gal
Swing Motore (each)	2.77 gal
Axle hub (front)	.31 gal
Axle hub (rear)	.39 gal
Axle differential (front axle)	6.9 gal
Axle differential (rear axle)	5.1 gal
Axle transmission	.8 gal
Swing ring lubrication reservoir	.26 gal
Central lubrcication reservoir	5.5 lb
Diesel exhaust fluid.	7.93 gal

ELECTRIC SYSTEM

System voltage	24 Volt
Battery	2 x 12 V, 120 Ah
Alternator	24V - 70A

Operating Weight

Operating Weight, typical	100,770lbs (45,700 kg)
---------------------------	------------------------

Central Auto Lube

Groeneveld-BEKA

LGNA-SS-MH50-202308-ENG-US

Specifications and designs are subject to change without notice. Machines shown may include optional equipment.

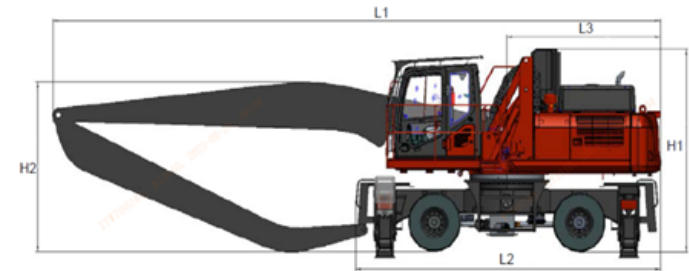
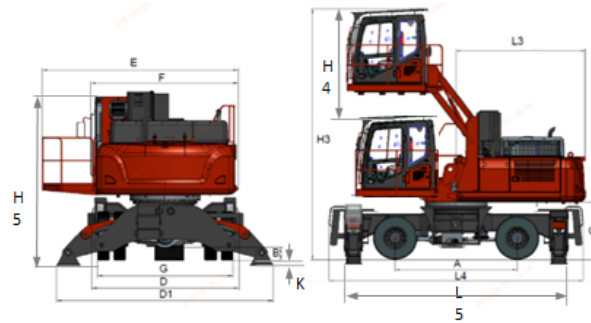
LiuGong Construction Machinery N.A., LLC.
22220 Merchants Way - Suite 100
Katy, TX 77449
USA

T: 281-579-8882
www.liugongna.com

F: 281-579-8388

SPECIFICATIONS

DEALER INFORMATION HERE



DIMENSIONS

Description	mm (In)
A Wheelbase	3200 (126")
B Ground Clearance	290 (11.4")
C Counterweight Clearance	1505 (59")
D Undercarriage width	3657 (144")
D1 Undercarriage width (all outrigger extended)	5016 (198")
E Width of upper structure (with operator catwalk)	3805 (150")
F Width of upper structure (without operator catwalk)	3136 (124")
G Track width (outside to outside)	3417 (135")
H1 Overall height	4012 (158")
H2 Boom height	3505 (138")
H3 Cab height (Raised)	6274 (247")
H4 Cab Raised height	3022 (119")
H5 Cab height (Lowered)	3908 (154")
K Wheel clearance (all outrigger extended)	2438 (96")
L1 Overall length (with front)	7010 (276")
L2 Overall length (without front)	3657 (144")
L3 Rear end length	3485 (137")
L4 Undercarriage length	6760 (266")
L5 Undercarriage length (all outrigger extended)	5946 (234")

DIMENSIONS

Description	mm (In)
Overall width of machine (transportation)	3505 (138")
Boom Length	37 feet
Stick Length	25 feet
Maximum Reach Radius	56 feet
Cab Rise and Lower Speed	Max. 396.24 (1.3) (ASME B30.25)
Ambient Operating Temperature	"-23°C to 45°C (-9.4°F to 113° F)"

LGNA-SS-MH50-202308-ENG-US

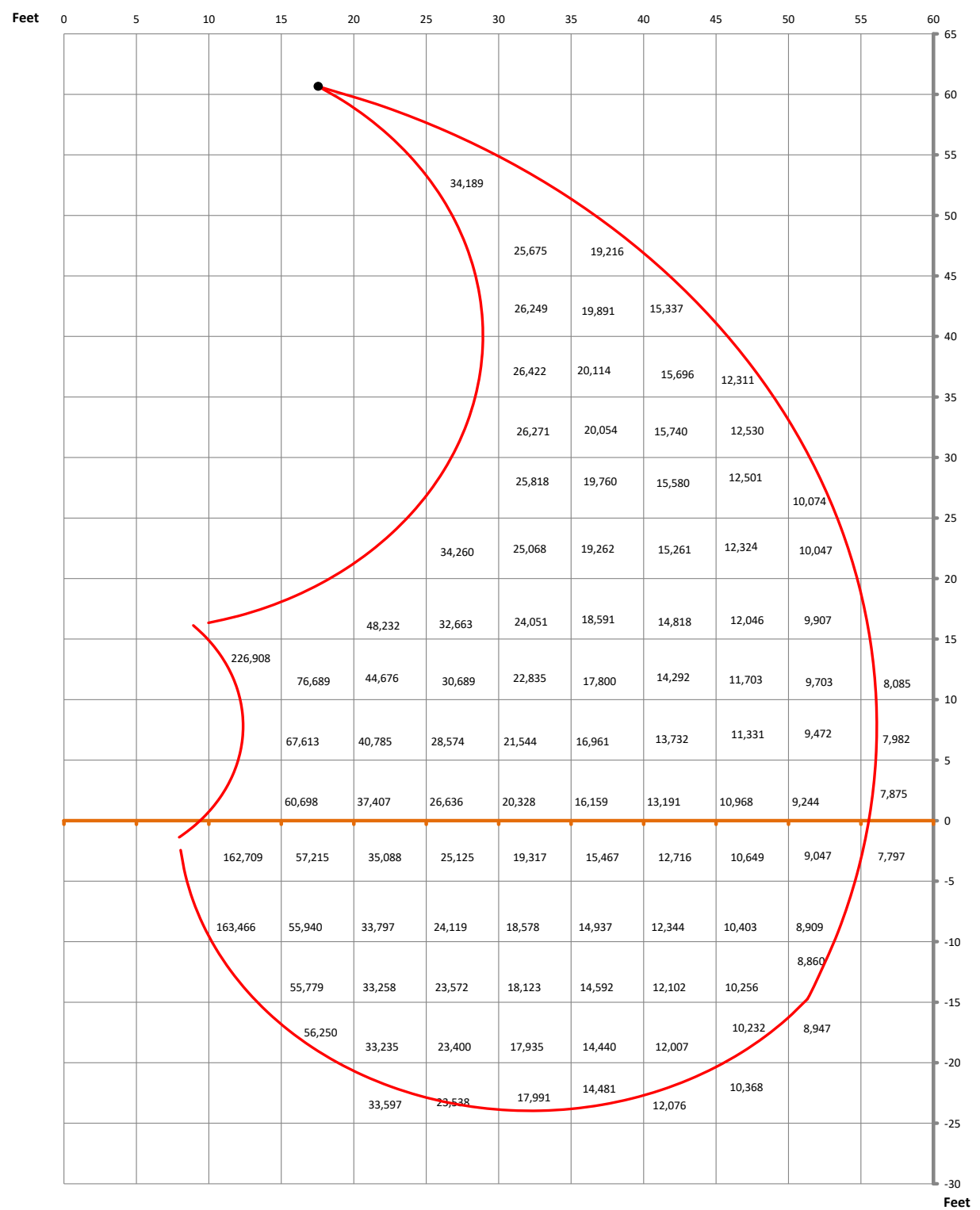
Specifications and designs are subject to change without notice. Machines shown may include optional equipment.

LiuGong Construction Machinery N.A., LLC.
22220 Merchants Way - Suite 100
Katy, TX 77449
USA

T: 281-579-8882
www.liugongna.com

F: 281-579-8388

MH 50 LOAD CHART



The load capacity number is in unit of pounds and the location is the left upper corner of the box. For example box 34,189 lbs is the load capacity at 25 ft reach and 55 ft height. The reach measurement is from the center point of the rotation bearing to the load point. The height is measured from the load point to ground. The load point is the center line of the attachment pivot mounting pin on the stick.

The load capacities are based on ISO 10567 and do not exceed 75% of tipping and 87% of hydraulic capacity and machine standing on firm, level supporting surface. Loads are valid for 360° with machine support outriggers. Lifting capacities do not include working equipment such as orange-peel grapples, magnets, clamshells, etc. Attachment weights must be deducted from the numbers indicated in the lift chart. Please contact LiuGong or your local dealer for optimum attachment selection. The operator of the machine should be fully acquainted with the operator's manual provided by LiuGong. Capacities apply only to the machine as originally manufactured and equipped by LiuGong.