

# MH-40XD

Material Handler

ENGINE Cummins QSB6.7	OPERATING WEIGHT 93,780 lb (42,500 kg)	GROSS POWER 225 hp 168 kw	MAX REACH 43 FT
-----------------------------	--	---------------------------------	--------------------





# SPECIFICATIONS

## ENGINE

Emissions rating	EPA Tier 4 Final
Make	Cummins
Model	QSB 6.7
Aspiration	Turbo charged, charge air cooled
Cooling fan drive	Reversible direct drive fan
Displacement	408 cu. In. (6.7L)
Gross power	225 HP (168 kW) @2200 rpm
Peak torque	700ft-lbs @ 1500rpm/949Nm @ 1500 rpm
Cylinders	In-line, 6 cylinder HPCRl
Bore x Stroke	107mm x 124mm (4.21 in x 4.88 in)

## HYDRAULIC SYSTEM

## KAWASAKI

### Hydraulic piloted joysticks for simplicity (no laptop needed)

Pump Type	Dual Axial Piston Pump
Maximum flow	L/Min 2x266
Max Pressure	4975 psi (34.3 mpa)
Filtration	Dual Filtration System

All pressures can be accessed through the cab display. No special gauges needed.

## UPPER CARRIAGE

The upper structure is strongly reinforced using an H-beam in the high cross section of main structure providing even weigh distribution and increasing stability. The platform's collision protection system has been welded into place to improve its strength, rigidity, and overall service life.

## TRAVEL / UNDERCARRIAGE

Type/ Drive System	All Wheel Drive variable displacement motor with dual stage power shift transmission
Travel Speed	1st 0 -4mph (0-7 km/h)   2nd 0-14 mph (23 km/h)
Tires	23.5 R25
Steering	Joystick steering
Rear Axle	Fixed
Front Axle	Oscillating with hydraulic lock, integrated safety check valves
Service Brake	Disc brakes
Parking Brake	Multidisc brake , spring loaded
Safety	Travel Alarm

## SWING SYSTEM

Drive	1 x axial piston motor, driving planetary gearbox, integrated brake valves
Swing speed	13 rpm
Swing Hydraulic	Open loop
Swing Brake	Multi disc brake, spring loaded
Swing Bearing	Internal teeth, sealed bearing

## Refill Capacities

Fuel tank	137 gal
Engine cooling system	9.25 gal
Engine oil w/filter	6.07 gal
Hydraulic tank	51.5 gal
Complete hydraulic system	95.1 gal
Swing Motors (each)	2.77 gal
Axle hub (front)	.31 gal
Axle hub (rear)	.39 gal
Axle differential (front axle)	6.9 gal
Axle differential (rear axle)	5.1 gal
Axle transmission	.8 gal
Swing ring lubrication reservoir	.26 gal
Central lubrication reservoir	5.5 lb
Diesel exhaust fluid.	7.93 gal

## ELECTRIC SYSTEM

System voltage	24 Volt
Battery	2 x 12 V, 120 Ah
Alternator	24V - 70A

## Operating Weight

Operating Weight, typical	93,790 lbs.
---------------------------	-------------

## Central Auto Lube

## Groeneveld-BEKA

## LGNA-SS-MH40XD-202308-ENG-US

Specifications and designs are subject to change without notice. Machines shown may include optional equipment.

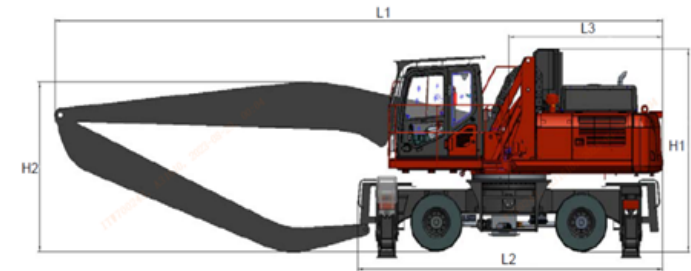
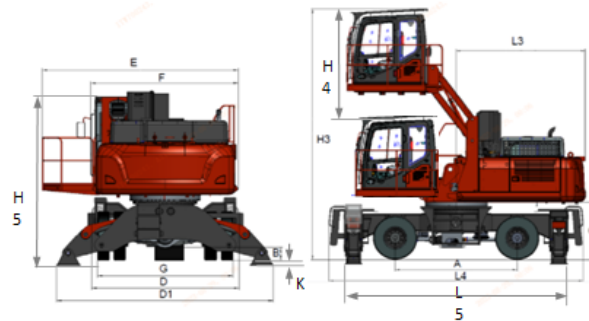
LiuGong Construction Machinery N.A., LLC.  
22220 Merchants Way - Suite 100  
Katy, TX 77449  
USA

T: 281-579-8882  
www.liugongna.com

F: 281-579-8388

# SPECIFICATIONS

DEALER INFORMATION HERE



## DIMENSIONS

Description	mm (In)
A Wheelbase	3251 (128")
B Ground Clearance	285 (11" 0)
C Counterweight Clearance	1727 (68")
D Undercarriage width	3276 (129")
D1 Undercarriage width (all outrigger extended)	4140 (163")
E Width of upper structure (with operator catwalk)	3327 (131")
F Width of upper structure (without operator catwalk)	3149 (124")
G Track width (outside to outside)	3505 (138")
H1 Overall height	4061 (160")
H2 Boom height	3962 (156")
H3 Cab height (Raised)	6680 (263")
H4 Cab Raised height	2946 (116")
H5 Cab height (Lowered)	3733 (147")
K Wheel clearance (all outrigger extended)	152 (6")
L1 Overall length (with front)	10972 (432")
L2 Overall length (without front)	7162 (282")
L3 Rear end length	3505 (138")
L4 Undercarriage length	7315 (288")
L5 Undercarriage length (all outrigger extended)	6172 (243")

## DIMENSIONS

Description	mm (In)
Overall width of machine (transportation)	4470 (176")
Boom Length	24 feet
Stick Length	13 feet
Maximum Reach Radius	43 feet
Cab Rise and Lower Speed	Max. 396.24 (1.3) (ASME B30.25)
Ambient Operating Temperature	"-23°C to 45°C (-9.4°F to 113° F)"

## LGNA-SS-MH40XD-202308-ENG-US

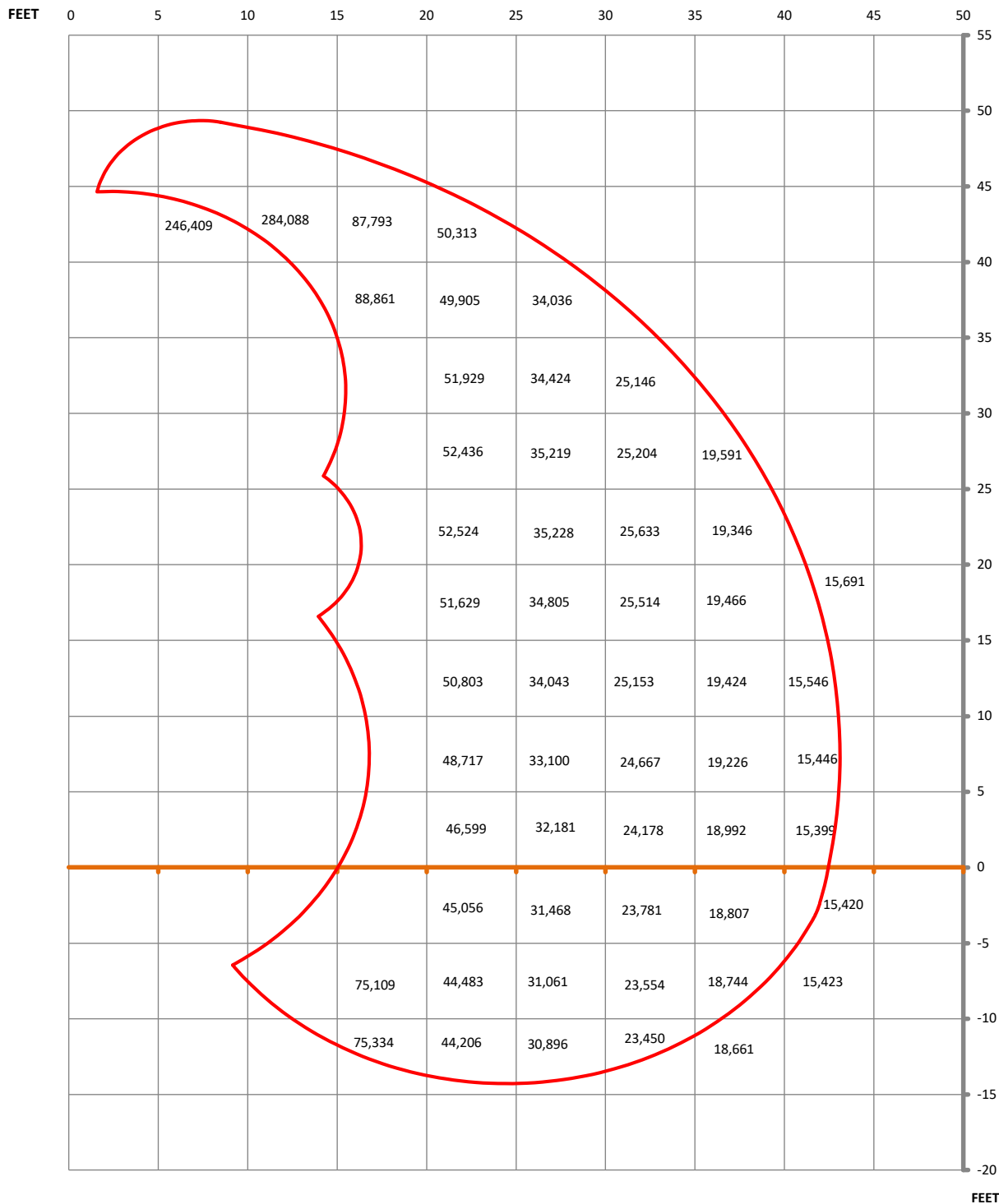
Specifications and designs are subject to change without notice. Machines shown may include optional equipment.

LiuGong Construction Machinery N.A., LLC.  
22220 Merchants Way - Suite 100  
Katy, TX 77449  
USA

T: 281-579-8882  
www.liugongna.com

F: 281-579-8388

# MH 40XD LOAD CHART 43 FT



The load capacity number is in unit of pounds and the location is the left upper corner of the box. For example box 34,036 lbs is the load capacity at 25 ft reach and 40 ft height. The reach measurement is from the center point of the rotation bearing to the load point. The height is measured from the load point to ground. The load point is the center line of the attachment pivot mounting pin on the stick.

The load capacities are based on ISO 10567 and do not exceed 75% of tipping and 87% of hydraulic capacity and machine standing on firm, level supporting surface. Loads are valid for 360° with machine support outriggers. Lifting capacities do not include working equipment such as orange-peel grapples, magnets, clamshells, etc. Attachment weights must be deducted from the numbers indicated in the lift chart. Please contact LiuGong or your local dealer for optimum attachment selection. The operator of the machine should be fully acquainted with the operator's manual provided by LiuGong. Capacities apply only to the machine as originally manufactured and equipped by LiuGong.